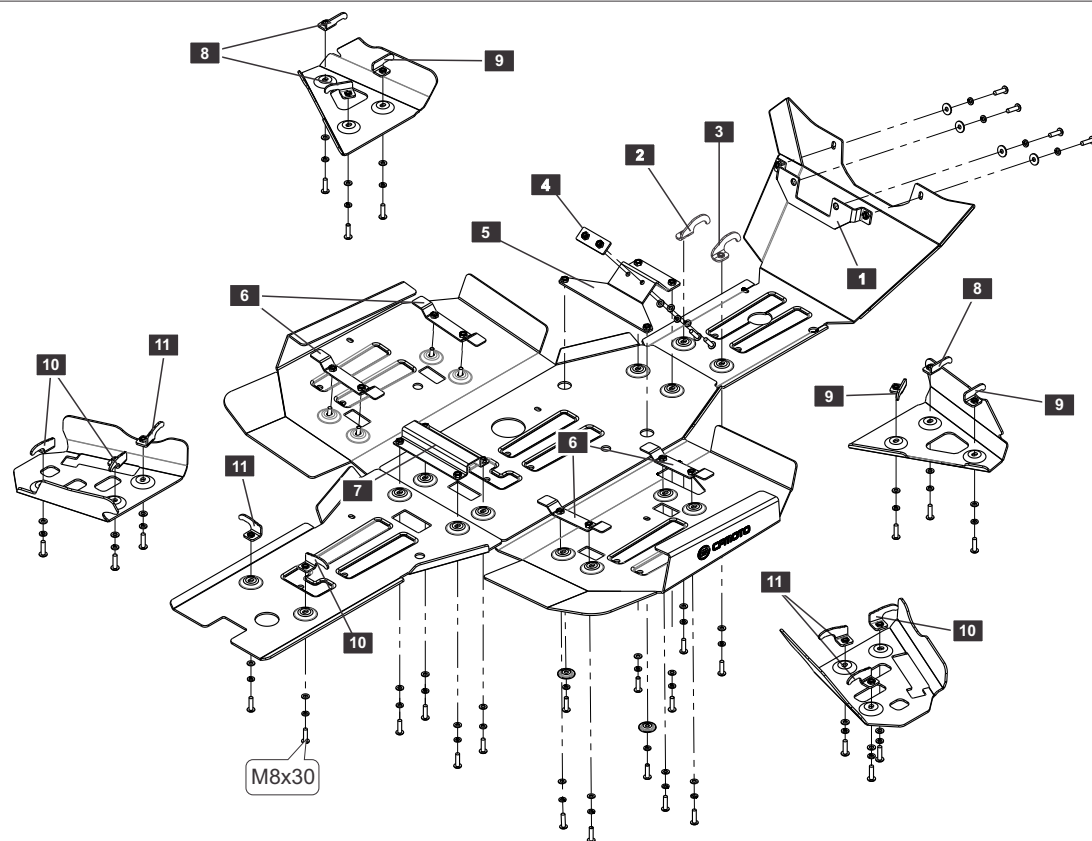
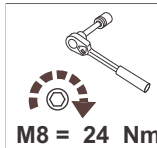


# CFMOTO CFORCE600, 2019-

Material: aluminum

## Main parts of skid plate set

| Part name | Part number | Fitting   |
|-----------|-------------|---|
| Main part | 40.4485     | 1) 1x Bracket<br>2) 1x Hook<br>3) 1x Hook<br>4) 1x Bracket<br>5) 1x Bracket<br>6) 4x Bracket<br>7) 1x Bracket<br>8) 3x Hook<br>9) 3x Hook<br>38x Screw M8x30<br>32x Washer 8 small<br>38x Washer 8G<br>4x Washer 8<br>2x SD 28000<br>10) 4x Hook<br>11) 4x Hook |



## CFMOTO CFORCE600. Skid plate Installation guide.

1. Remove plastic duster.
2. Install brackets "1" under the fairleads.
3. Install in a transverse profile beam of the frame of the ATV, brackets "4" and "5" using screws M8x30.
4. Install the back part of the skid plate using hooks "10", "11" and the bracket "7".
5. At the mounting points of the bracket "7" and "5", install the middle part of the skid plate.
6. Install the front part of the skid plate using hooks "2", "3" and the mounting points of the bracket "1". The front part of the skid plate should be over the middle part of the skid plate.
7. Put brackets "6" into longitudinal beams of frame of thresholds. Put the side steps of skid plate on plastic thresholds of the ATV using the mounting points of the bracket "6". The side steps of skid plate should be over the middle part.
8. Install the front A arms of skid plate using hooks "8" and "9".
9. Install the back A arms of skid plate using hooks "10" and "11".
10. Tighten all fastening points.

